

PHOENIX Audio Technologies

Using the Beyerdynamic OM302 US with Phoenix Stingray

The Classis OM 302 gooseneck microphone is designed for ceiling mounting. The microphone has a short vflexible gooseneck and is ideal for installations with a low ceiling. The microphone terminate in a single gang plate for easy installation into a standard electrical box.



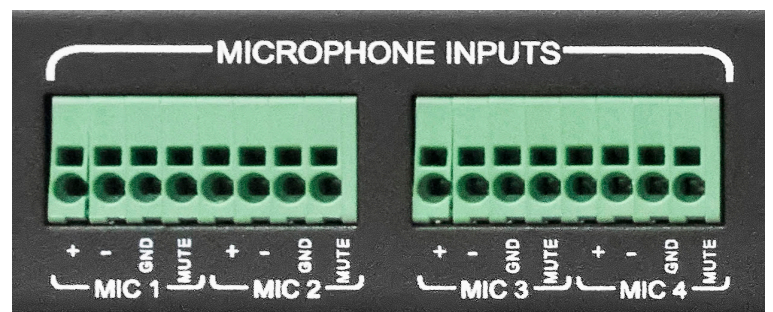
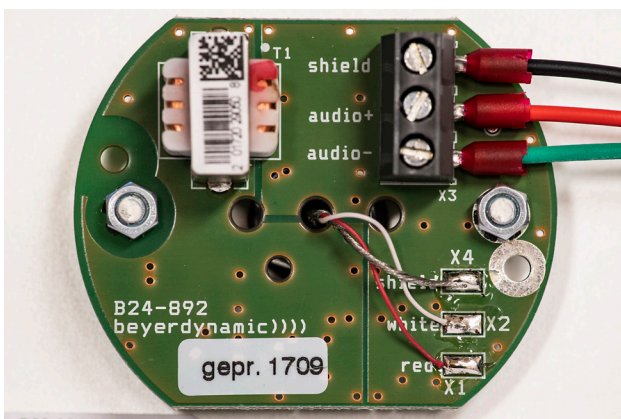
Beyerdynamic Classis OM302 Specifications

Microphone Sensitivity: 17 mV/PA
Dynamic Range: 107 dB-A
Require Phantom Power: 8-52V

Recommended Mic Sensitivity

Ceiling Mount: 26 dB
Loud Speaker Output: 22 dB

1) The microphone should be connected to to the "microphone input" port of the Stingray. Note on the beyerdynamic mic, Audio + and Audio - with the Shield being ground.



Setting the Stingray

The Stingray's mixer should be assigned to the mic mixer. The setting can be selected either via the device front panel or through the Stingray's setup GUI. **NOTE: Mic Mixer is the Default on the Stingray.**

Stingray Front Panel :

1) From the front panel enter into the menu



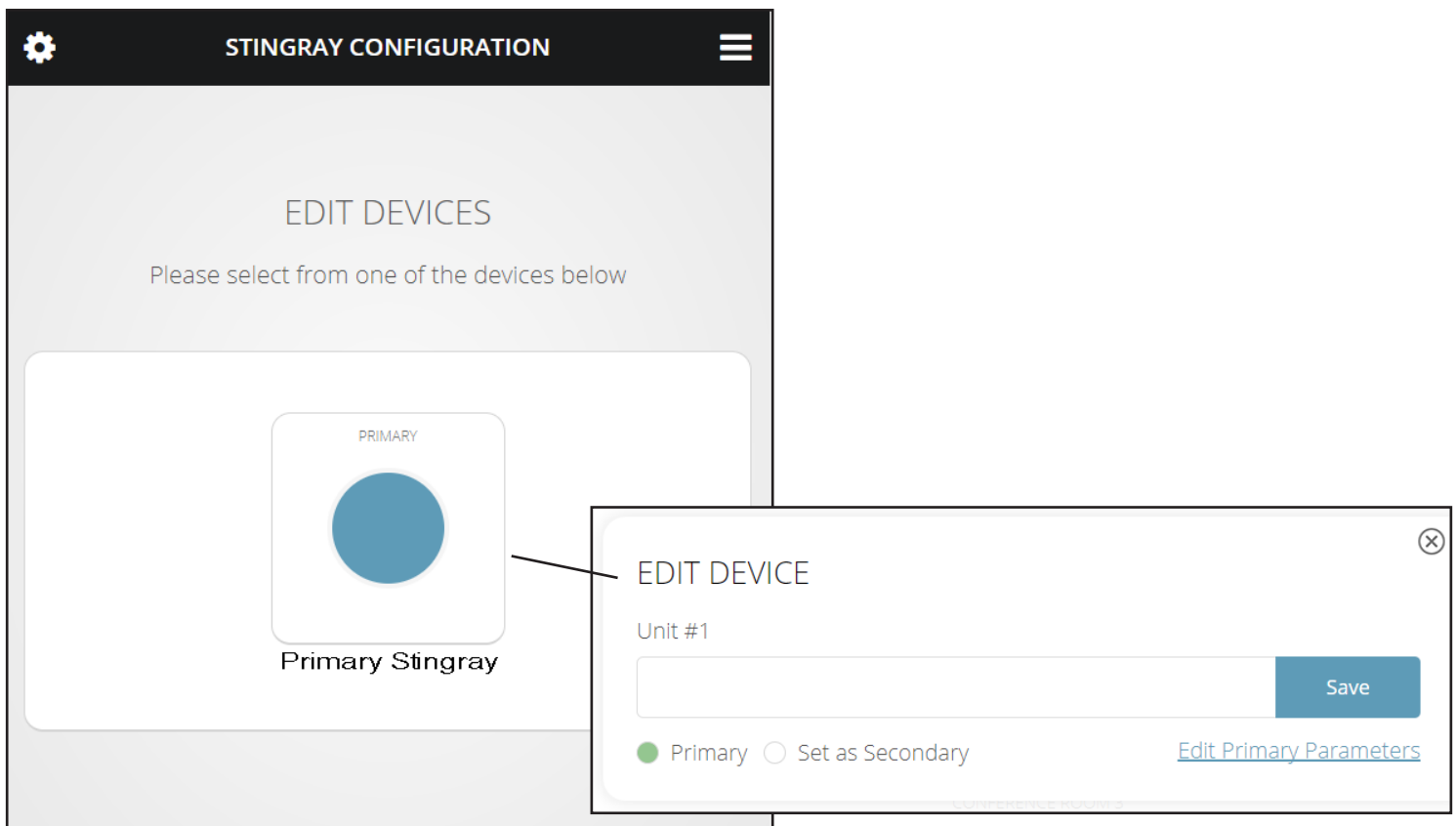
2) Scroll down to the second menu item which is the "automatic mixer selection".

3) Select it, and in it select "mix microphone input".

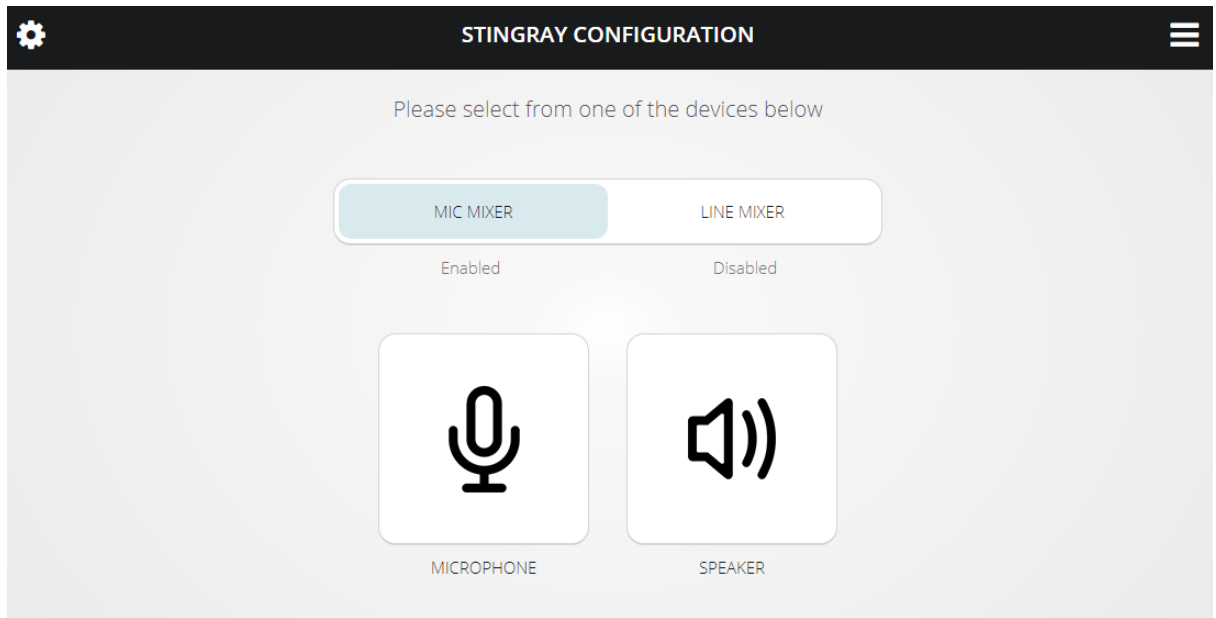


Stingray GUI:

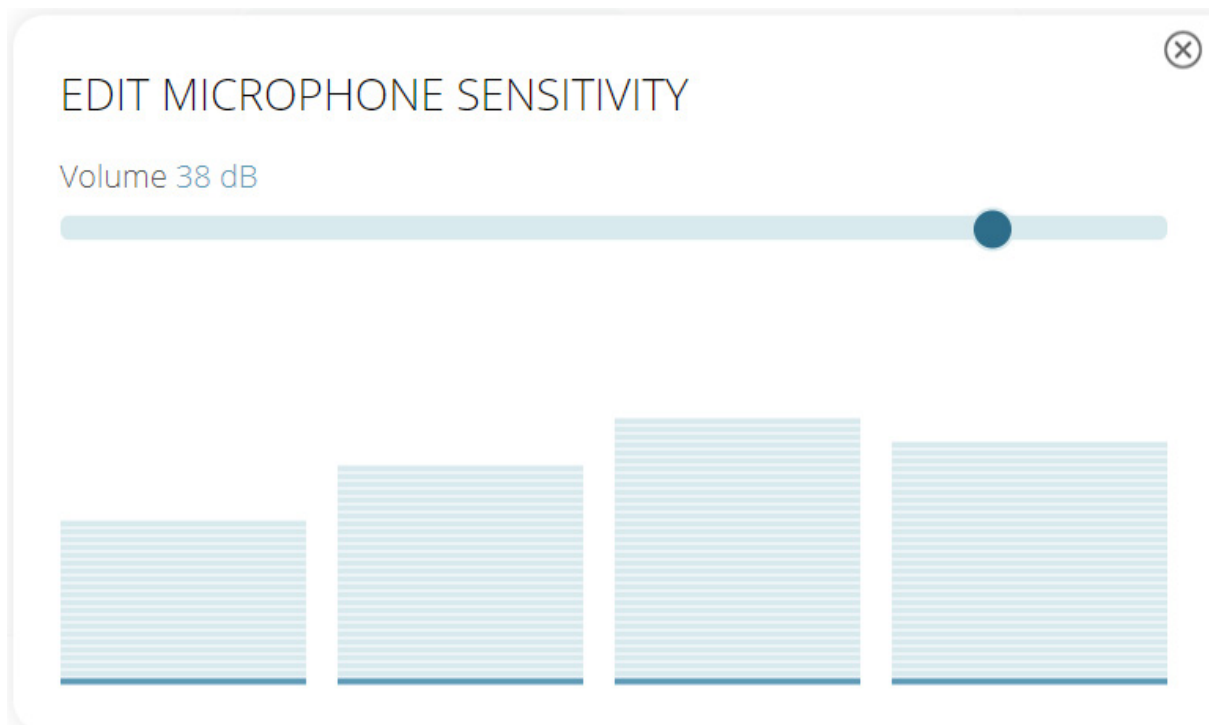
1) Select the primary unit and then click on "edit primary parameters".



2) In the next screen you should select MIC MIXER.



3) Select the Microphone button to adjust microphone sensitivity. You can also view the microphone levels from this screen.



Beyerdynamic Classis OM 302 US Ceiling Microphone - Tested Configurations

1) Ceiling Mount

Challenges:

- When testing the OM 302 microphone, there was issues when the speaker volume out is set at high levels.

Solutions:

- When using in a setting with loud speaker volume output, it is recommended to adjust the microphone sensitivity setting to 22 dB.